



VIRSEC®



ABS Approved Fully Online Course
Behavioural Threat Detection
Using CCTV for Port Security

www.VIRSEC.org

About the Course

CCTV operators in ports are often the first line of defence against unauthorised access, hostile reconnaissance, smuggling behaviours, and security breaches.

This online course develops the skills to detect, interpret, and act upon behavioural indicators of threat, duress, and deception through CCTV.

Designed for port control rooms and maritime surveillance teams, it helps operators shift from passive monitoring to proactive detection, improving the clarity of intelligence passed to gate teams, patrols, and supervisors, and strengthening decision-making, escalation, and evidence-led reporting.

The CCTV Behavioural Threat Detection & NVC Analysis course is a self-paced online programme built for port security control rooms and maritime surveillance teams.

Built on behavioural science and Non-Verbal Communication (NVC) principles, it provides practical tools to recognise pre-incident indicators, detect behavioural anomalies, and support confident escalation decisions across restricted zones, access points, waterside approaches, and high-risk operational areas.

Course Duration

The Behavioural Threat Detection Using CCTV for Port Security Course has an expected duration of 3.5 hours.

Target Audience

This essential course is designed for:

- **Port CCTV Operators / Control Room Staff:** Operators monitoring access points, restricted zones, quaysides, terminal areas, and live incidents.
- **Port Facility Security Officers and Supervisors:** Personnel responsible for decision-making, response coordination, and incident management.
- **Gatehouse and Access Control Teams:** Staff screening vehicles, personnel, and contractors at controlled entry points.
- **Marine Unit Support / Waterside Patrol Coordination:** Teams supporting vessel movement monitoring and waterside security activity.
- **HSSE / Operational Leads:** Personnel seeking improved CCTV cueing, reporting quality, and intelligence-led response.

Course Certificate

Upon completion of this online course, learners will receive a ABS Approved Certificate for Threat Detection using CCTV for Port Security.



+44 (0)161 763 4427



www.virsec.org



training@virsec.org



CCTV operators at maritime ports play a critical role in protecting complex, high-risk environments where the movement of people, vehicles, and cargo creates opportunities for criminal and terrorist activity. An operator's ability to identify potential security threats and emerging risks is essential to preventing incidents before they occur, particularly in locations with restricted access areas, critical infrastructure, and international transit. Early recognition of suspicious behaviour, hostile intent, or preparatory actions allows timely intervention, reduces reliance on reactive response, and strengthens the overall security posture of the port.

Course Learning Objectives

LO1: NVC Analysis & Threat Detection for Port and Maritime CCTV Operations

Learners will identify non-verbal behavioural indicators of hostile intent, stress, deception, concealment, and suspicious activity in port and maritime environments, including behaviours linked to reconnaissance, access probing, and pre-incident positioning, and record observations to support operational and evidential decision-making.

LO2: Situational Awareness Frameworks & Behavioural Baselines for Port and Maritime CCTV

Learners will apply the Absence of the Normal, Presence of the Abnormal (ANPA) principle to establish behavioural baselines across port environments, identify deviations from normal patterns, and assess anomalies to inform risk assessment and escalation decisions.

LO3: Crowd and Flow Profiling for Port and Maritime CCTV

Learners will analyse crowd density, movement, and flow in passenger and operational areas to identify emerging risk points, disorder, or evasive behaviours and support proactive crowd safety and threat mitigation.

LO4: Team Coordination & Operational Effectiveness in Port and Maritime CCTV Operations

Learners will communicate CCTV observations effectively, coordinate with operational teams,

and support timely tasking, escalation, and defensible reporting during dynamic incidents.

Course Learning Outcomes

LO1: NVC Analysis & Threat Detection for Port and Maritime CCTV Operations: Detect hostile intent, duress, deception, concealed weapons, and suspicious activity, including behaviours linked to reconnaissance, access probing, and pre-incident positioning in restricted areas.

LO2: Situational Awareness Frameworks & Behavioural Baselines for Port and Maritime CCTV: Apply the Absence of the Normal, Presence of the Abnormal (ANPA) principle to identify behavioural anomalies. Establish baselines across gates, perimeter zones, quayside movement routes, and staff-only areas, and identify deviations that signal risk.

LO3: Crowd and Flow Profiling for Port and Maritime CCTV: Assess crowd dynamics in passenger processing areas, queue systems, vessel embarkation points, and high-footfall transition spaces to identify epicentres where threats, disorder, or evasive behaviours emerge.

LO4: Team Coordination & Operational Effectiveness in Port and Maritime CCTV Operations: Strengthen communication and coordination between control room staff, patrols, gate teams, and supervisors, improving tasking, escalation decisions, and evidential clarity under pressure.



+44 (0)161 763 4427



www.virsec.org



training@virsec.org



Effective use of behavioural threat detection while monitoring CCTV enables operators to move beyond passive observation and actively assess intent, not just actions. By understanding behavioural indicators such as anomalous movement patterns, stress responses, concealment cues, and reconnaissance behaviours, operators can distinguish genuine threats from normal port activity. This behavioural approach improves situational awareness, supports accurate decision-making under pressure, and ensures that concerns are escalated appropriately, helping to disrupt criminal or terrorist activity at the earliest possible stage.



Why Choose This Course

- **Specialist focus:** Unlike standard CCTV training, this programme focuses on behavioural threat detection and nonverbal analysis, giving operators tools beyond “observe and report”.
- **Operational relevance:** Built for the unique pressures of port environments including gates, fencelines, quaysides, cargo areas, and terminal movement routes.
- **Proactive security:** Learn to spot behavioural anomalies early, producing actionable intelligence before incidents escalate.
- **Layered approach:** Strengthens existing surveillance and security systems by improving the quality of cueing, escalation, and reporting.
- **Practical delivery:** Self-paced learning designed for shift teams, delivered through a variety of video modules and scenario-based instruction ensures the learning translates into improved performance in the control room.

Course Subjects

This course is built around practical, control-room focused modules that assist CCTV operators detect risk earlier, prioritise attention faster, and escalate with more confidence, subjects include:

- Foundations of Nonverbal Communication (how the brain processes and projects signals)

- Identifying reconnaissance patterns, loitering behaviours, and access testing
- Operating effectively in multi-camera, multi-priority environments
- Behaviour-led cueing: tracking, prioritising, and escalating anomalies
- Practical Applications: deception, concealment behaviours, confidence vs discomfort
- Operational Integration: applying NVC analysis within layered port security

Prerequisites

Foundational Security Knowledge: A general awareness of front-line roles and responsibilities is beneficial, though not mandatory. Basic familiarity with port layouts, camera systems, access control processes, and standard control room comms.

Experience in Operational Environments: Previous exposure to security operations, incident response, or control room environments will support comprehension, but all levels are welcome.

Commitment to Skill Development: Active participation is required. Learners should be prepared to observe, analyse, and apply behavioural and nonverbal communication techniques in practical settings.

Basic English Proficiency: As course materials and instruction are delivered in English, participants should have a working understanding of the language to fully engage with the content.



+44 (0)161 763 4427

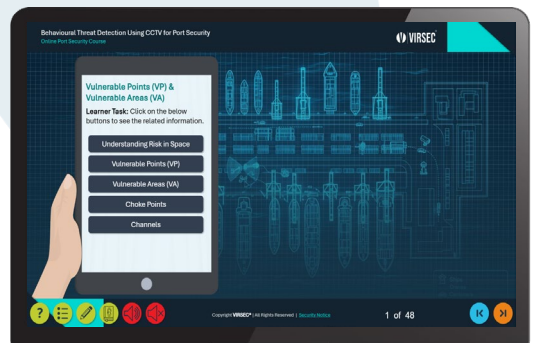
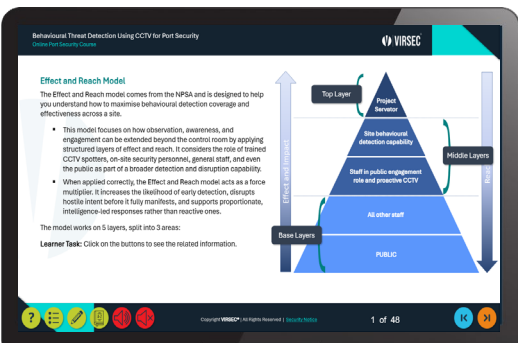
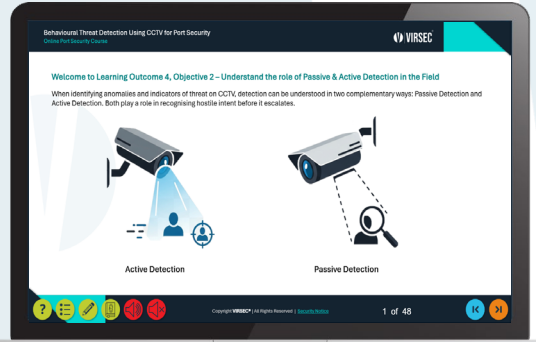
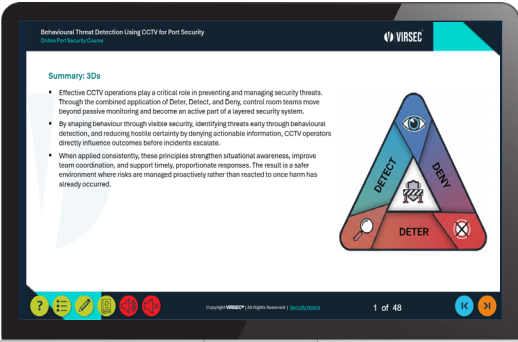
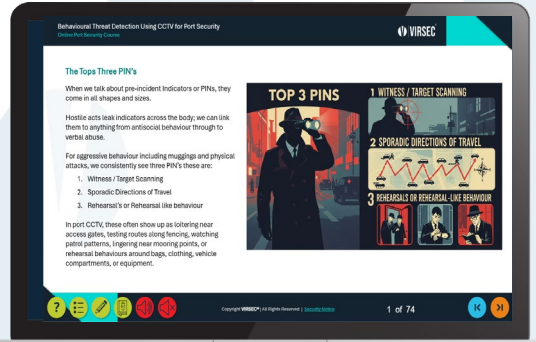
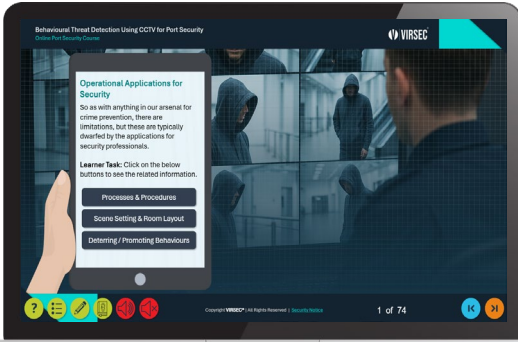


www.virsec.org



training@virsec.org

Sample Course Slides



+44 (0)161 763 4427



www.virsec.org



training@virsec.org





Contact Us

VIRSEC Ltd.
Canada House
3 Chepstow Street
Manchester
M1 5FW
United Kingdom

T: +44 (0)161 763 4427

E: training@virsec.org

W: www.virsec.org



+44 (0)161 763 4427



www.virsec.org



training@virsec.org

