



Fully Online CPD Accredited
Elements of Shipboard Safety



About

This course is a relevant and essential introduction to the Health & Safety aspects of living and working onboard a ship of any type or size, anywhere in the world.

Many of the learning points are illustrated with real word 'Case Studies' that outline and analyse accidents and disasters at sea and then go on to explain the results of subsequent investigations and theories of how the accidents might have been avoided.

The learner will find confirmation questions throughout the learning topics that cement your knowledge as you learn. At the end of each module is a 'final assessment' which can be seen as a type of test or exam. The pass mark for the module assessments is 70%.

Target Audience

Considering the extensive presence of vessels and humans at sea it is inevitable that there will be incidents and accidents leading to the loss of property, life and environmental damage.

No two voyages are the same, they usually involve different and often unexpected circumstances. While research has shown that the frequency of accidents is declining, human error continues to be a dominant factor in a

high proportion of those maritime accidents that do occur. Investigations reveal that common contributing factors are hazardous conditions, errors in judgement, unsafe work practices, and a failure to wear a personal flotation device (PFD) in circumstances where it would have saved life. This course is therefore aimed at any seafarer engaged in any capacity onboard a vessel at sea, or in port.

Responsibilities of the Employer

Under OS&H legislation an employer shall, so far as is practicable, provide and maintain a working environment in which the employees are not exposed to hazard .. that means, 'provide a safe workplace'. The following are some broad guidelines as to how this can best be achieved, by:

- providing safe systems of work.
- providing information, instruction, training and supervision of its employees.
- consulting and co-operating with its employees.
- providing adequate personal protective clothing and equipment.
- ensuring that the employees are not exposed to any hazards.
- having a system of notification of workplace accidents to the OS&H authority.



+44 (0)161 763 4427



www.virsec.org



training@virsec.org



Responsibilities of the Employee

The employee must also contribute to his/her own safety and health, and the safety and health of others.

Employees must take reasonable care for their own safety and health at work and avoid harming the safety and health of others. To achieve this standard the employee must:

- Follow safety and health instructions.
- Use personal protective clothing and equipment.
- Take good care of, and maintain, equipment.
- Report hazards.
- Follow the correct hazard-reporting procedures.
- Report work-related injuries or harm to health.
- Cooperate with employers, with the common aim being to improve safety and health in the workplace.

Pre-Requisites

There are no pre-requisites for attending this online Course.

Why Take This Course

- ✓ Accredited by the CPD Accreditation Group
- ✓ Written by Subject Matter Experts
- ✓ Course Certificate Available Upon Completion
- ✓ Online Training Aids in the Retention of Information
- ✓ Course Taken at Own Pace & Convenience
- ✓ Full Course Notes Available from the Course

Course Duration

The course lasts for approximately 5 hours depending on the learner's abilities and reading speed. You can enter and exit this course as often as you require.

Course Pricing

The online course is £45 UK Pounds or the equivalent of an associated currency at the time of purchasing this course. Email us to learn about bulk course booking discounts.

Discount Offer

If you purchase this course today, please use the following coupon code to receive **10% OFF** the listed course price.

EOSS10



+44 (0)161 763 4427



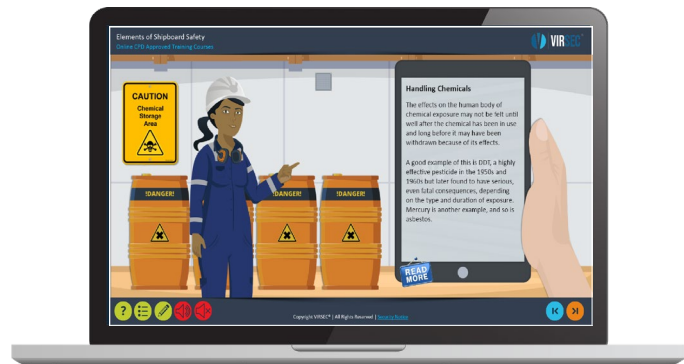
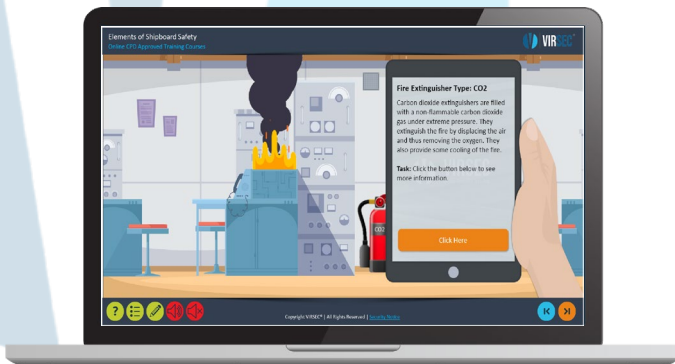
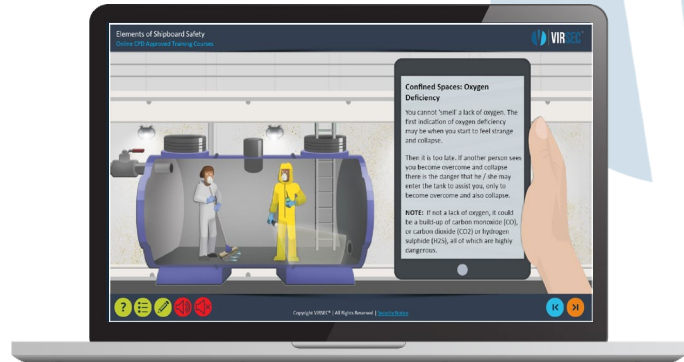
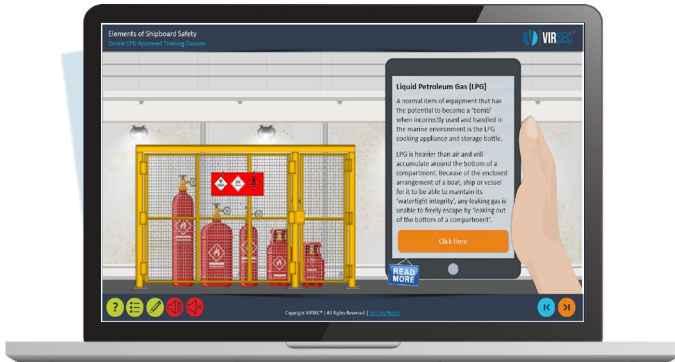
www.virsec.org



training@virsec.org



Sample Course Slides





Contact Us

VIRSEC Ltd.
Units 2a(i) & 2a(ii)
Beehive Mill
Jersey Street
Manchester
M4 6JG
United Kingdom

T: +44 (0)161 763 4427

E: training@virsec.org

W: www.virsec.org