



ABS

Fully Online

American Bureau of Shipping Approved

Maritime English Test (MET)

For Cruise Ship & Passenger Vessel Staff



About

This Maritime English Test has been specifically designed for non-crew members of Cruise Ships, such as stewards, cleaners, bar staff, entertainment, and general staff. These persons must possess a good standard of English to both communicate with the passengers and crew members on board, but also understand emergency communications used in the maritime environment.

The VIRSEC Maritime English Test (MET) for Non-Crew Members of Cruise Ships is designed to assist Ship Operators and employers make recruiting and training decisions by assessing the English language understanding and skills of personnel in the position they are applying to fulfil.

Test Duration

The user must attempt the test in 90 minutes, and in one sitting. Candidates will be timed as they tackle the questions, to simulate exam conditions and must achieve a minimum score of 70% to pass.

Note: If a candidate does not answer all the questions by the time the timer runs out, they will fail those unanswered questions. Test delegates will be allowed a second attempt at the test for free should they not succeed the first time. If they fail a second attempt, the test will have to be re-purchased.

Target Audience

The VIRSEC Maritime English Test for Non-Crew Members of Cruise Ships is designed to assess candidates' English language competence between the levels of 'Beginner' and 'Elementary' (CEFR (Europe): A1 to A2 and ILR (United States): Level 0 to 1).

Regulations

The English Tests are designed from the ground up using approved guidelines from the International Maritime Organisation (IMO Model English Course 3.17); IMO Standard Marine Communication Phrases (SMCPs); and consistent with the functional framework set out by the Standards of Training, Certification and Watchkeeping (STCW).

Why Take This Test

- ✓ VIRSEC Maritime English Tests are 100% Online
- ✓ Questions Draw from a Randomised Pool
- ✓ Includes STCW Maritime Functional Areas & IMO SMCPs
- ✓ Assesses the Five Primary Language Skills
- ✓ 40% of Questions Assess Spoken-Word Comprehension
- ✓ Consistent with Internationally Recognised Standards



+44 (0)161 763 4427

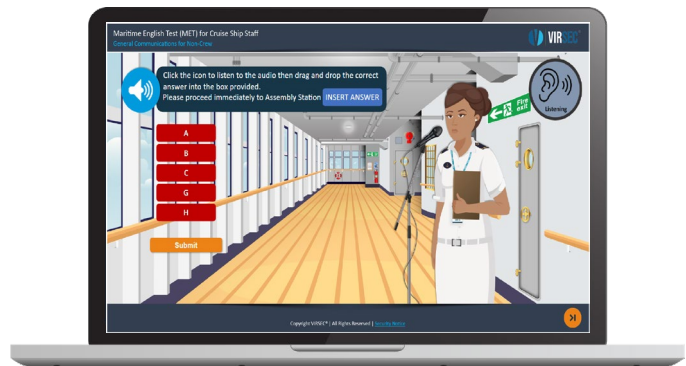
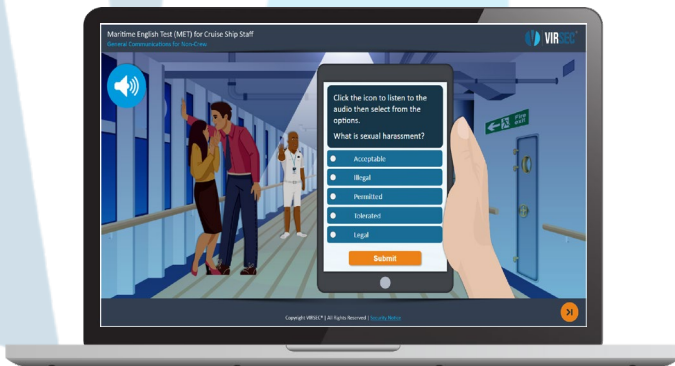
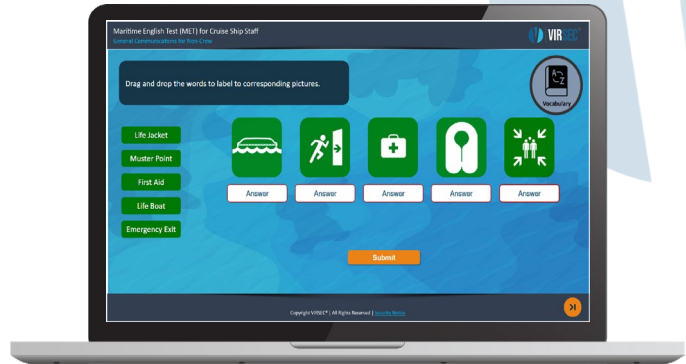
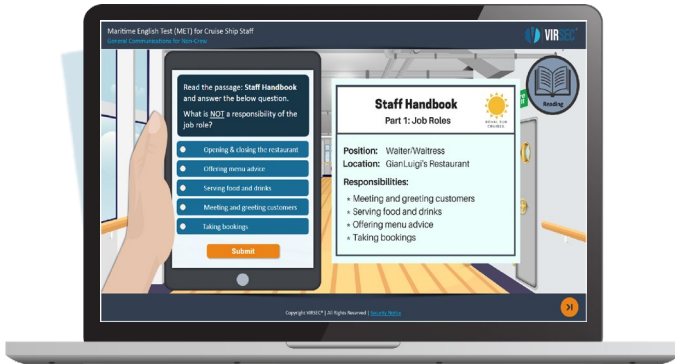
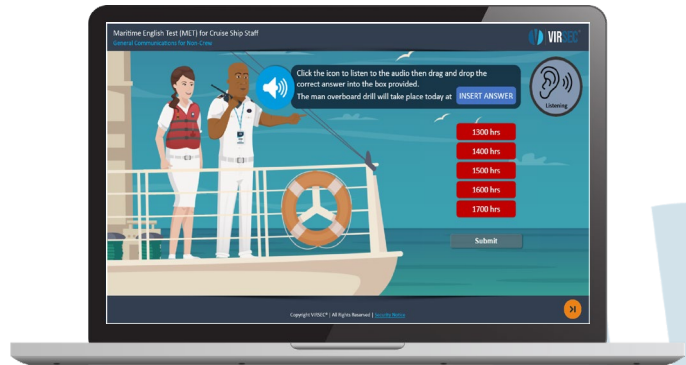


www.virsec.org



training@virsec.org

Sample Course Slides





Contact Us

VIRSEC Ltd.
Units 2a(i) & 2a(ii)
Beehive Mill
Jersey Street
Manchester
M4 6JG
United Kingdom

T: +44 (0)161 763 4427

E: training@virsec.org

W: www.virsec.org